

---

**S&P Global**

Market Intelligence

# **Xpressfeed Web Service Downloader**

**File Download Application**



## Client Support

Email: <a href="mailto:support.datafeed.mi@spglobal.com">support.datafeed.mi@spglobal.com</a> File delivery support is available 24/7/365			
<b>U.S. / Canada / South America</b>	<b>Sales &amp; Support:</b> 1.800.523.4534 or 1.303.721.4802	<b>China</b>	+86.10.6569.2985 8:00 a.m. – 5:00 p.m. local time Monday – Friday
<b>Mexico</b>	303.721.4802	<b>Japan</b>	+81.3.4550.8350 8:00 a.m. – 5:00 p.m. local time Monday – Friday
<b>Europe</b>	+44. 20.7176.8580	<b>South Korea</b>	+82.2.2022.2395 8:00 a.m. – 5:00 p.m. local time Monday – Friday

August 21, 2025

v1.3

# Table of Contents

<b>Document Overview.....</b>	<b>1</b>
What You Will Find in This User Guide.....	1
Supporting Documentation.....	1
<b>Xpressfeed Web Service Downloader.....</b>	<b>3</b>
Introduction.....	3
Downloader Uses.....	3
Downloader Features.....	3
Minimum Supported Frameworks and Language Versions.....	3
<b>Downloading and Setting Up Environment.....</b>	<b>5</b>
Download the Required Java Version.....	5
Set the Environment Path Variables.....	5
Required Setup for the Downloader Application.....	5
<b>Running the Downloader.....</b>	<b>7</b>
Settings Tab.....	10
On-Demand Tab.....	13
Scheduler Tab.....	20
Supplemental Packages.....	25
Scheduler Service.....	28
<b>Revision History.....</b>	<b>31</b>

# Document Overview

---

## What You Will Find in This User Guide

This document is a guide to the features and capabilities of the Xpressfeed™ Web Service Downloader (“Downloader”).

## Supporting Documentation

- *Xpressfeed Web Service* – This document describes how Xpressfeed Web Service—an alternative data file downloading mechanism to our Enterprise Data eXchange (EDX)—provides file distributions through a web service interface over Amazon Simple Storage Service (Amazon S3).
- *Xpressfeed File Delivery Schedule* – This spreadsheet provides expected full and change file delivery times as well as the length of time the files remain on the server.
- If you are linking to other S&P Global Market Intelligence datasets, supporting documents are available at [support.marketplace.spglobal.com](http://support.marketplace.spglobal.com).

This page is intentionally blank.

# Xpressfeed Web Service Downloader

---

## Introduction

Xpressfeed Web Service Downloader ("Downloader") is an application designed to download files automatically from AWS Simple Storage Service (S3) through a user interface.

Downloader is a windows desktop application developed using Java language. This application has been integrated with the Java SDK client library for xons3, which is internally calling the xons3 endpoints for getting entitlements, file details, and signed URL. To download files, the application uses Java SDK for download.

## Downloader Uses

Downloader is used mainly for three purposes\*:

1. Configuring a new user's credentials and, if required, proxy settings.
2. On-demand downloads.
3. Scheduling the package(s) for the downloader service.

\*A database stores user credentials, schedules, and tracks file downloads.

## Downloader Features

Features include:

- Downloading files from S3 to a user-defined directory.
- Easy configuration through the user interface.
- Download the data in an EDX-like directory structure where all files for a package are downloaded to the same folder.
- On-demand download
- Schedule file downloads at package level without manual user intervention.
- Schedule for monthly, daily, span (intraday) and weekly packages.

## Minimum Supported Frameworks and Language Versions

**Library:** Java

**Minimum Supported Version:** Amazon Corretto 1.8.

This page is intentionally blank.

# Downloading and Setting Up Environment

---

## Download the Required Java Version

1. Go to <https://docs.aws.amazon.com/corretto/latest/corretto-8-ug/downloads-list.html>
2. From the list, download the relevant JDK for a specific Operating system.
3. Once saved, unzip the JDK into a folder of your choice.

## Set the Environment Path Variables

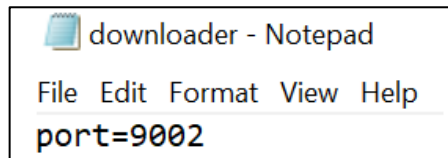
### Windows 10 and Windows 8

1. In Search, search for and then select: System (Control Panel)
2. Click the **Advanced system settings** link.
3. Click **Environment Variables**. In the section **System Variables** find the PATH environment variable and select it. Click **Edit**. If the PATH environment variable does not exist, click **New**.
4. In the **Edit System Variable** (or **New System Variable**) window, specify the value of the PATH environment variable. Click **OK**. Close all remaining windows by clicking **OK**.
5. Reopen Command prompt window and run your java code.

## Required Setup for the Downloader Application

1. The Downloader Application uses a database as **HSQldb** and it will be hosted on **Port 9002 by default**. If any application already uses this port number, the port number can be configured by accessing the **downloader properties source** file in the XpressfeedWebServiceDownloaderV2.2.1 Folder.

<\\...\\XpressfeedWebServiceDownloader2.2.1\\downloader.properties>




	downloaderlogs	File folder		
	setup	File folder		
	downloader	Properties Source File	1 KB	No
	DownloaderApp	Windows Batch File	1 KB	No
	RegisterSchedulerTask	Windows Batch File	1 KB	No
	UnRegisterSchedulerTask	Windows Batch File	1 KB	No

**Important!** DO NOT delete the **hsqldb** folder which is placed in the setup folder.

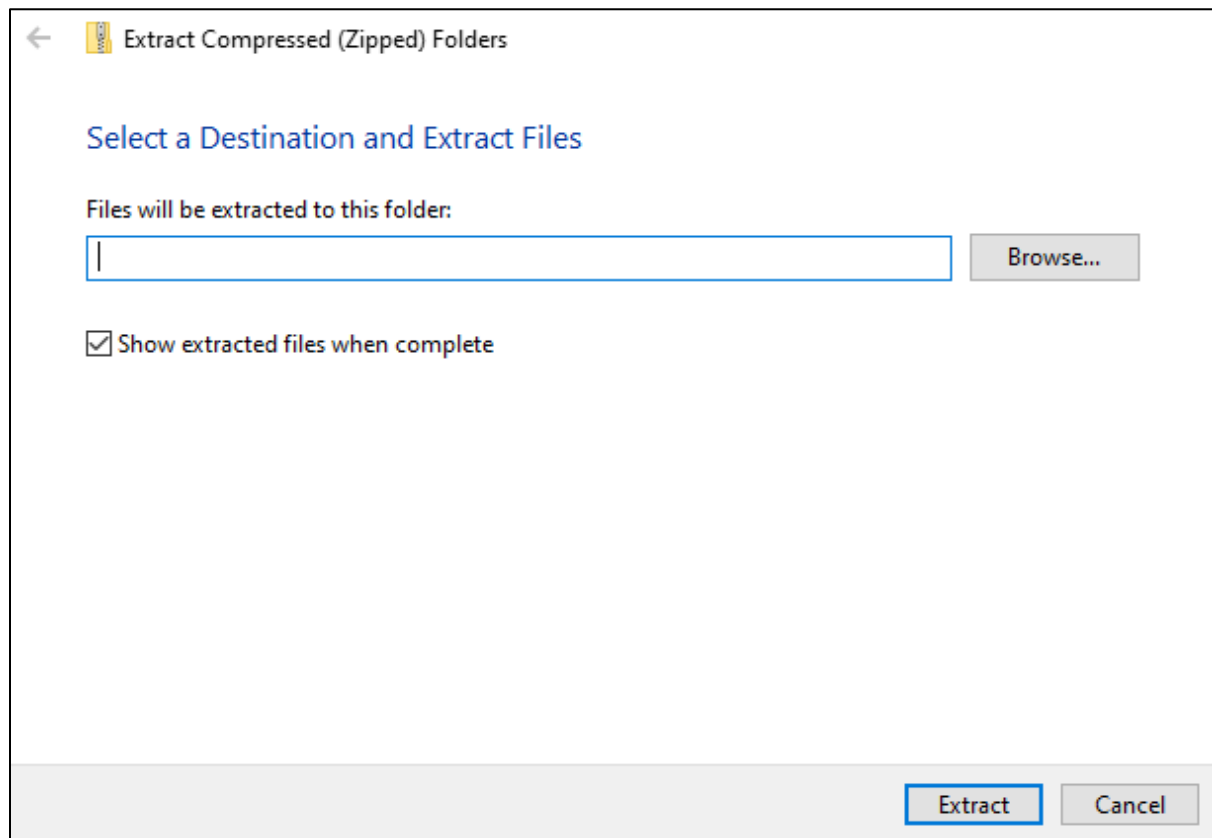
	hsqldb	1/5/2023 3:03 PM	File folder	
	AppConfig	1/5/2023 3:01 PM	Windows Batch File	1 KB
	DownloaderApp	1/5/2023 3:01 PM	Executable Jar File	51,944 KB
	ScheduledDownloader	1/5/2023 3:01 PM	Executable Jar File	47,765 KB
	ScheduledDownloaderService	1/5/2023 3:01 PM	Windows Batch File	2 KB
	shutdown	1/5/2023 3:01 PM	Windows Batch File	1 KB

2. Create a **Root directory** example(C:\DownloaderApplication) and provide the read and write permission to the folder. Use this folder as root directory while adding settings in **Downloader application**.

# Running the Downloader

1. Click [here](#) for the latest Xpressfeed Web Service Downloader Application compressed (zipped) folder:  XpressfeedWebServiceDownloaderV2.2.1
2. Double-click the zipped file or click **Open**.  
This will open a page in your browser.
3. Click **Download**.
4. Navigate to your **Downloads folder** and locate the compressed folder, e.g., XpressfeedWebServiceDownloaderV2.2.1.zip.
5. Right-click the compressed folder and select **Extract All**.

This will launch:









6. **Browse** to the folder where the files will be extracted and click **Extract**.
7. Double-click **XpressfeedWebServiceDownloaderV2**.
8. Double-click **DownloaderApp** (Windows Batch File)

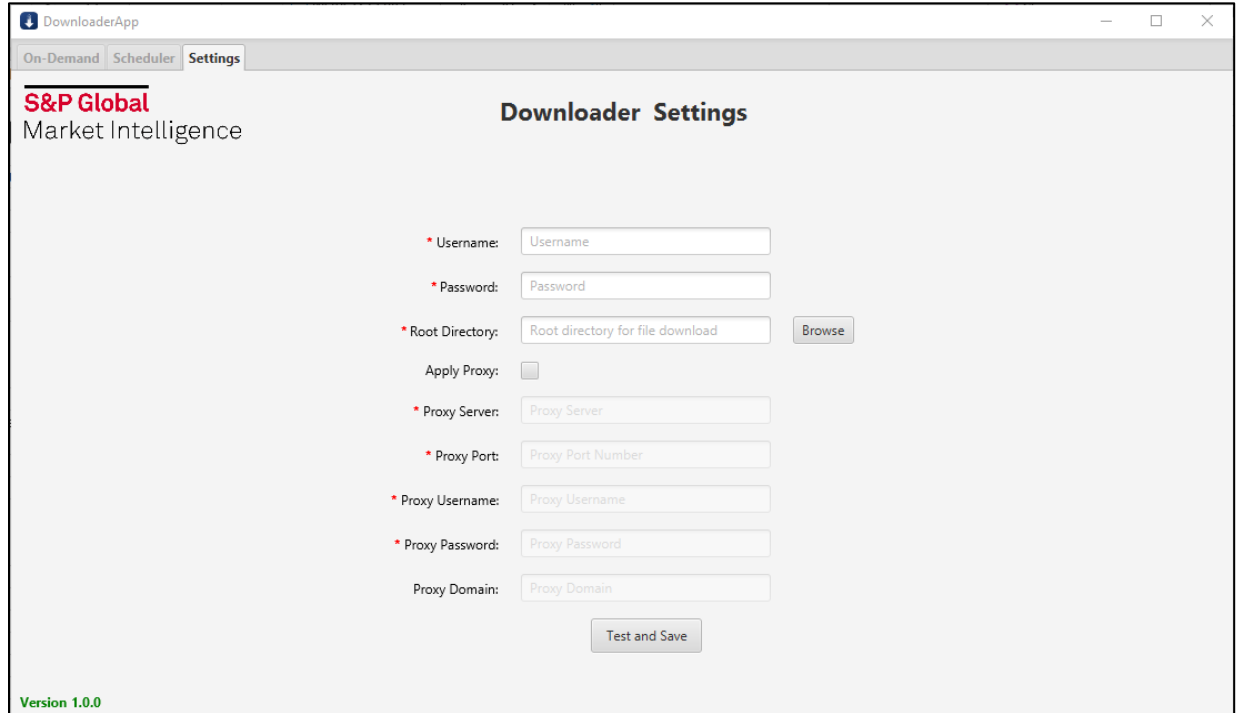
setup	12/13/2022 7:47 AM	File folder	
downloader.properties	12/13/2022 7:47 AM	PROPERTIES File	1 KB
DownloaderApp	12/13/2022 7:47 AM	Windows Batch File	3 KB
RegisterSchedulerTask	12/13/2022 7:47 AM	Windows Batch File	1 KB
UnRegisterSchedulerTask	12/13/2022 7:47 AM	Windows Batch File	1 KB

**Important!**

- Do not click DownloaderApp (Executable Jar File), as it will not connect to the database.
- Do not delete the hsqldb folder.
- Whenever a newer version of the application is being installed/reinstall the existing application, it is recommended to run **shutdown.bat** to stop all the running XFWS java processes. This file is available under the setup folder.

 hsqldb	12/13/2022 7:47 AM	File folder	
 AppConfig	12/13/2022 7:47 AM	Windows Batch File	1 KB
 CleanupJavaProcess	12/13/2022 7:47 AM	Windows Batch File	1 KB
 DownloaderApp	12/13/2022 7:47 AM	Executable Jar File	51,944 KB
 ScheduledDownloader	12/13/2022 7:47 AM	Executable Jar File	47,765 KB
 ScheduledDownloaderService	12/13/2022 7:47 AM	Windows Batch File	2 KB

You will see the Downloader Application:



DownloaderApp

On-Demand Scheduler Settings

**S&P Global**  
Market Intelligence

**Downloader Settings**

\* Username:

\* Password:

\* Root Directory:

Apply Proxy: ☐

\* Proxy Server:

\* Proxy Port:

\* Proxy Username:

\* Proxy Password:

Proxy Domain:

Version 1.0.0

## Settings Tab

In the Settings Tab, you can save your credentials, along with the proxy settings, for the on-demand download and the scheduler to populate the entitled packages for the user account, as well as define the root directory (the path where the files will be downloaded).

The screenshot shows a web application window titled 'DownloaderApp'. It has three tabs: 'On-Demand', 'Scheduler', and 'Settings'. The 'Settings' tab is selected. The main content area is titled 'Downloader Settings'. On the left, there is a logo for 'S&P Global Market Intelligence'. The settings form contains the following fields and controls:

- \* Username: [Text input field]
- \* Password: [Text input field]
- \* Root Directory: [Text input field] [Browse button]
- Apply Proxy: [Checkbox]
- \* Proxy Server: [Text input field]
- \* Proxy Port: [Text input field]
- \* Proxy Username: [Text input field]
- \* Proxy Password: [Text input field]
- Proxy Domain: [Text input field]
- [Test and Save button]

Version 1.0.0

### Fields/Functionalities

\*Red asterisks designate required fields.

- \*Username:** This field stores the username. This information is usually set by the entitlement team (S&P Global).
- \*Password:** This field stores the password. This information is usually set by the entitlement team (S&P Global).
- \*Root Directory:** Browse to the path where you would like to store the files; this can be any path on your system.
- Apply Proxy:** Proxy settings are optional and they depend on your infrastructure setup.
- Note:**
- If you do not plan to apply proxy settings, click **Save**. This will save the username, password, and the root directory.
  - If you plan to apply proxy settings, check **Apply Proxy** and continue. Your IT Administrator will be able to share the proxy setting details.
- \*Proxy Server:** This field stores your proxy server.
- \*Proxy Port:** This field stores the proxy port of your system as needed.

**\*Proxy Username:**

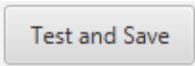
This field stores the username that allows access through your proxy server.

**\*Proxy Password:**

This field stores the password that allows access through your proxy server. All passwords are stored in an encrypted format.

**Proxy Domain**

This is an optional field and will be required if your network has multiple domains which are accepted by the proxy server.



This functionality saves your settings once they have been configured.

**Important!**

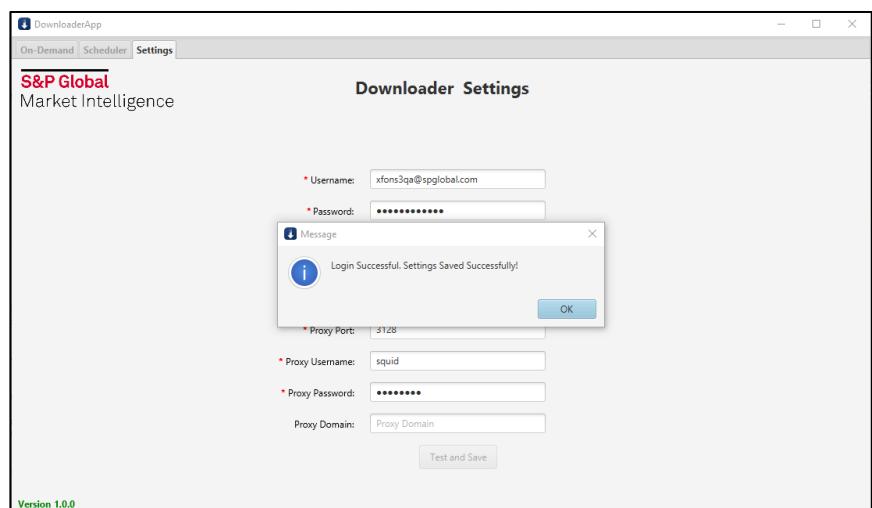
The application has a database connection for keeping user details or tracking the files after the download.

When you click **Test and Save**, the application will automatically store the details in the database.

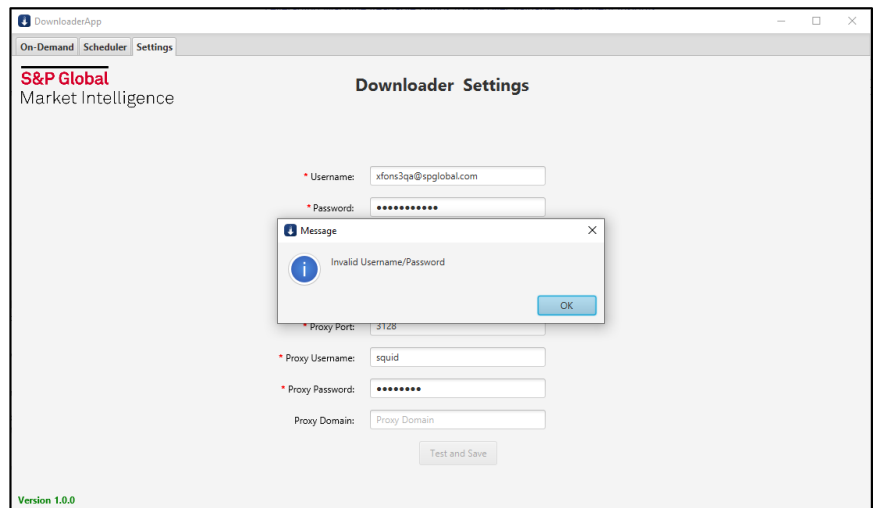
The username and password must be saved in the Settings to run the On-Demand Downloader below.

**Pop-up messages will notify you about the status of the login process:**

➔ **Login Successful message:**



➔ Login Unsuccessful message:

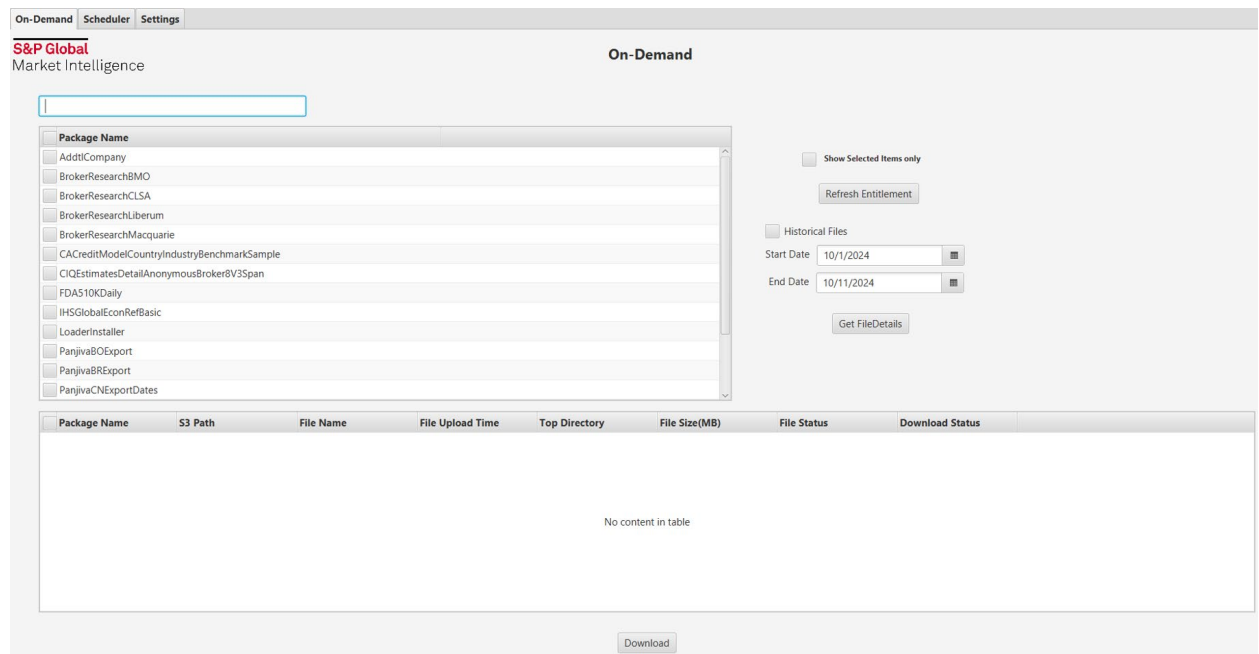


## On-Demand Tab

On-Demand is the default tab when the application is loading. If it was previously configured, it will load entitlements for you by using the stored user credentials (stored previously in the Settings tab).

This tab enables you to perform three main functions:

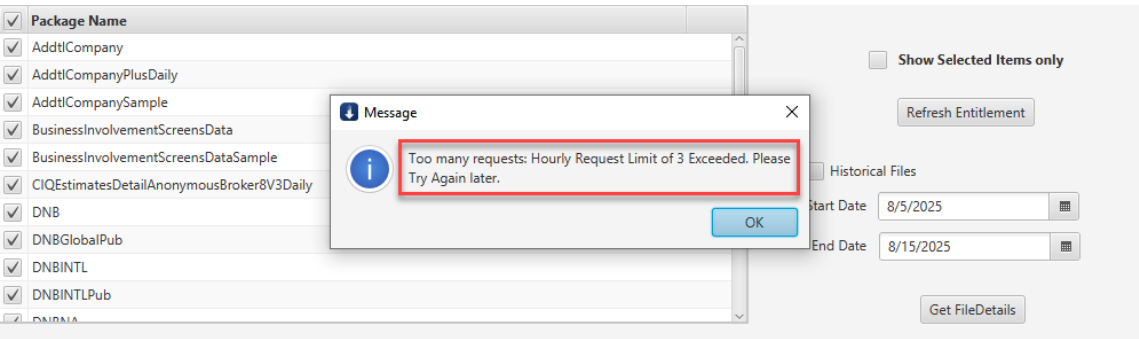
- **Refresh Entitlement**
- **Get FileDetails**
- **Download**



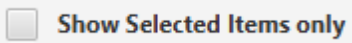
## Throttling Requests (Downloader On-Demand Tab)

1. **Standard Throttling**  
To prevent abuse and maintain service stability, standard throttling is applied to all requests.
2. **Usage Limits**  
In addition to throttling, default **hourly** and **daily** request limits are enforced per user account.
3. **Limit Exceeded Handling**  
If a user exceeds the allowed limits, an alert message box will appear with details similar to:  
**"Too many requests: [Hourly/Daily] Request limit of [limit] exceeded. Please try again later."**

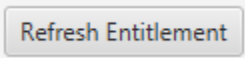
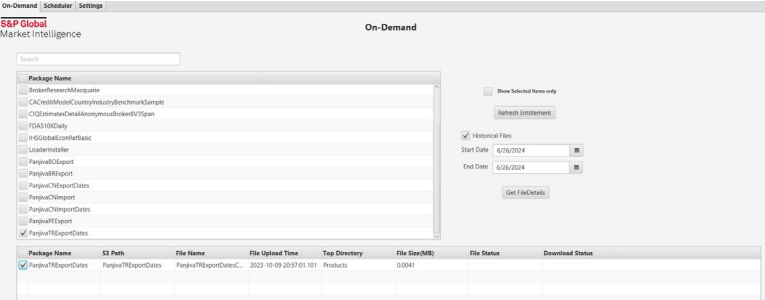
Throttling error on UI: In the below screenshot, the number 3 is an example only. If your account exceeds the throttle limit, a similar alert message will be displayed in the On-Demand UI.



**Fields/Functionalities**

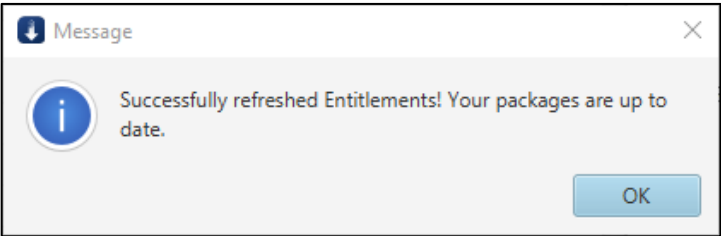


Selecting this functionality reloads only the packages you selected. You need to check the Historical Files box for files that are more than 90 days old from the current day A separate capability Contact your Account Manager for access to historical files.



Reloads all the packages to which you are entitled.

➔ **Refresh Entitlements Successful message:**



**Search**

Allows you to search for a particular package.

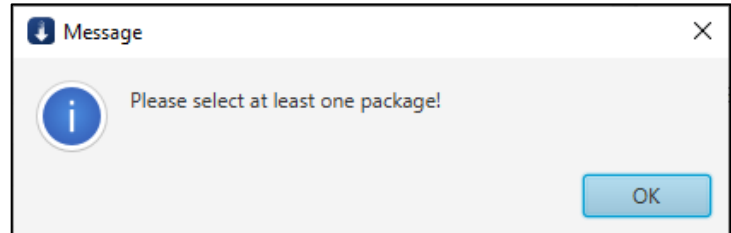
**Package Name**

The column presents the list of all the packages to which you are entitled.

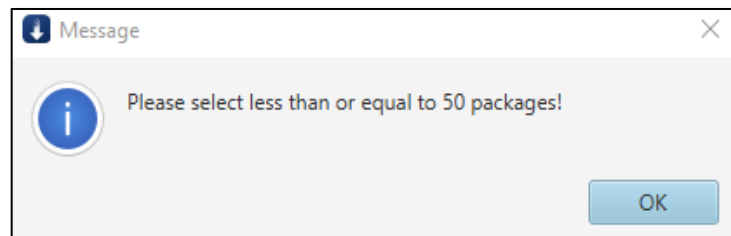
- Clicking the top box (to the left of Package Name) selects all the packages. You may select certain packages by checking them individually.

- Clicking the tab provides the option of listing the packages in ascending or descending order.

→ **Message reminding you to select at least one package:**



→ **Message reminding you to select less than or equal to 50 packages:**

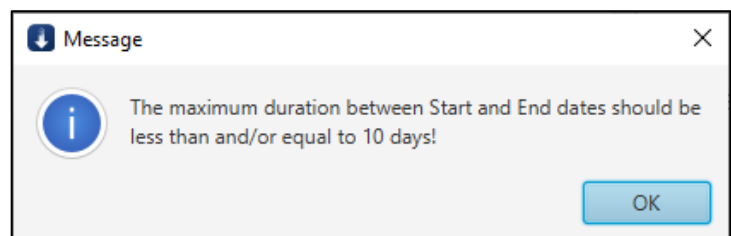


**Start Date**

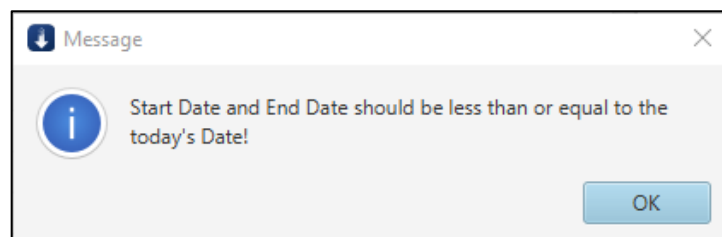
Using the dropdown, the field allows you to select the start date of the date range for which you want to get file details. The Start Date defaults to less than 10 days from the current date. Start Dates are in UTC (Coordinated Universal Time).

**Important!** The Start Date must be less than or equal to 10 days from the End Date.

→ **Invalid date range message:**



→ **Invalid date range message about today's date:**

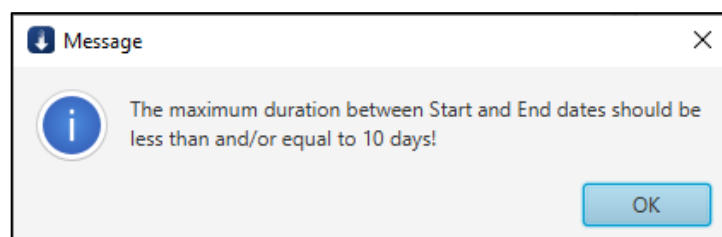


### End Date

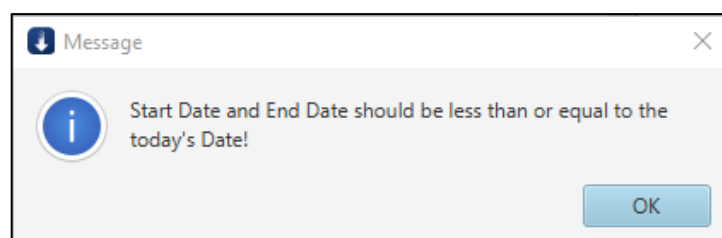
Using the dropdown, the field allows you to select the end date of the date range for which you want to get file details. The End Date defaults to the current date. End Dates are in UTC.

**Important!** The End Date must be less than or equal to 10 days from the Start Date.

### → Invalid date range message:



### → Invalid date range message about today's date:



Get FileDetails

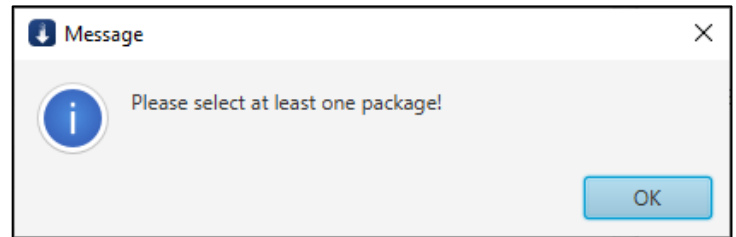
This functionality will get all the file details for the selected package(s).

### **Important!**

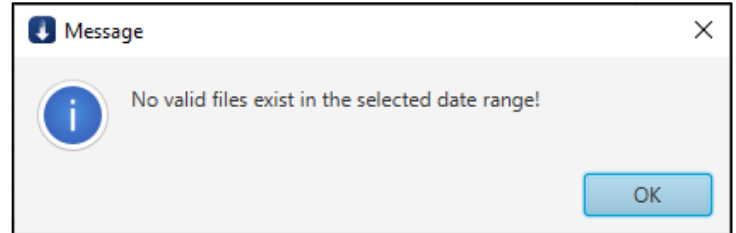
- You must select at least one package to get file details.
- You must specify a valid date range to get file details: the Start Date and the End Date must be within 10 days of each other.

### Pop-up messages

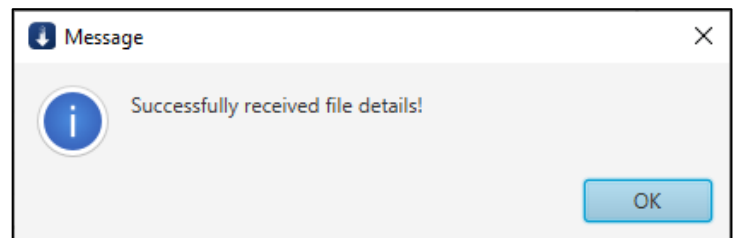
#### → Please select at least one package!:



→ No valid files exist in the selected date range:

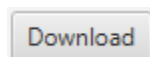


→ Successfully received file details!



File details include:

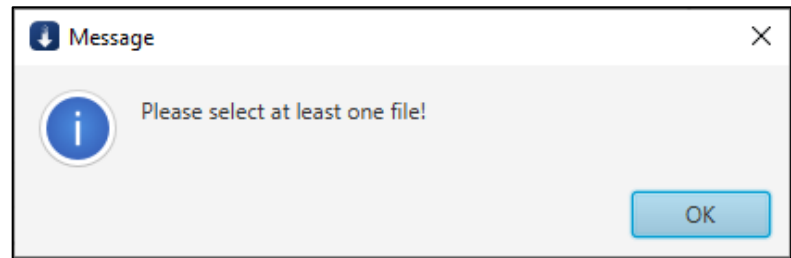
- Package Name
- S3 Path
- File Name
- File Upload Time (UTC time format)
- Top Directory
- File Size(MB)
- File Status
- Download Status



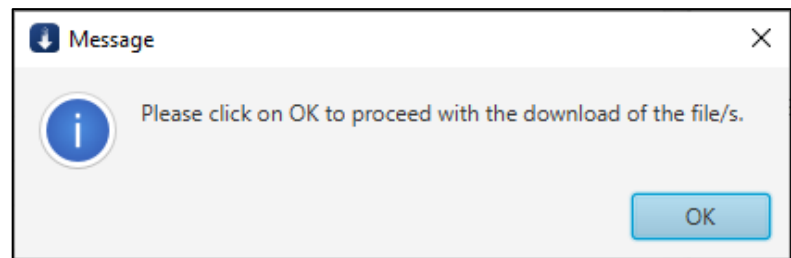
Downloads the details for the selected files.

**Pop up messages**

→ Please select at least one file!



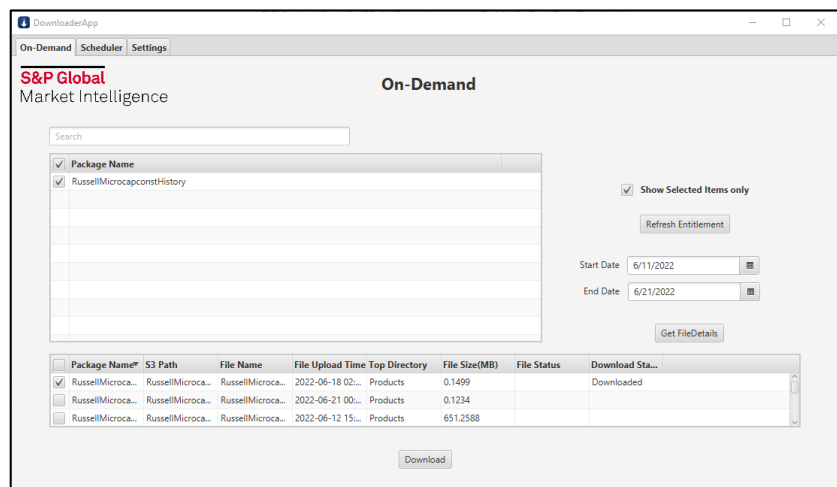
→ Please click on OK to proceed with download of the file/s:



A status may be one of the following:

- **In-progress** – showing while a file is being downloaded.
- **Downloaded** – showing when a file has been downloaded
- **Failed** – when a file was not able to download from the S3.

*Example for Downloaded*



## Location of the downloaded files

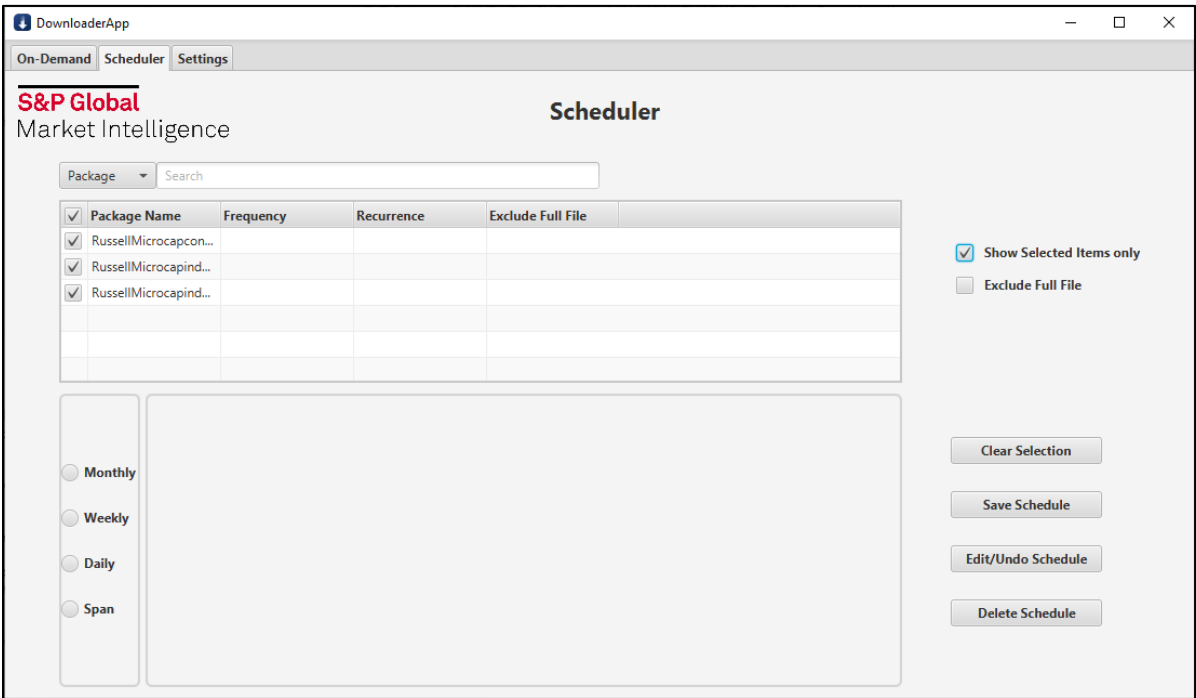
The files are downloaded into the **Products/Xpressfeed** folder generated automatically in the root directory whose location (application-hosted location) was specified during the

settings configuration.

- Navigate to the folder **Products/Xpressfeed**.
- Double-click the folder inside **Products/Xpressfeed** (folder is named after the file that was downloaded).

## Scheduler Tab

The main purpose of this tab is to schedule the download of the packages.



### Throttling Requests (Downloader Scheduler Service)

- 1. Throttling Enforcement**  
To maintain system stability and prevent overuse, throttling limits are applied to all downloader service requests.
- 2. Request Limits**  
The scheduler is subject to the same hourly and daily request limits as user accounts.
- 3. Limit Exceeded Handling**  
When the scheduler exceeds the allowed limits, no alert is shown since there is no direct user interaction.
- 4. Logging**  
All throttling events and limit breaches for scheduler requests are **logged** in **schedulerlogs/** folder

### Fields/Functionalities

- |                     |   |
|---------------------|---|
| <b>Search</b>       | Allows you to search for a particular package. Using the dropdown, you can search by package name or package frequency. |
| <b>Package Name</b> | The column presents the list of all the packages to which you are   |

entitled.

- Clicking the top box (to the left of Package Name) selects all the packages. You may select certain packages by checking them individually.
- Clicking the tab provides the option of listing the packages in ascending or descending order.

**Frequency** Clicking the tab provides the option of listing the selected files in ascending or descending frequency.

**Recurrence** Clicking the tab provides the option of listing the selected files in ascending or descending recurrence.

**Exclude Full File** Selecting this functionality excludes the full file for selected files. The default value is to include the full file.

**Show Selected Items only** Selecting this functionality shows selected items only in the scheduler.

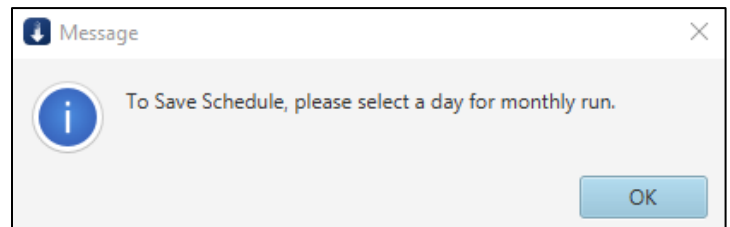
**Exclude Full File** Selecting this functionality will exclude full files from the scheduler for selected items. The default value is to include full files.

**Monthly** The monthly choice enables you to define the day of the month and time of day for the download:

- **Day:** Using the dropdown, enables you to select the day of the month for the download.

#### Pop-up message

→ **To Save Schedule, please select a day for monthly run:**

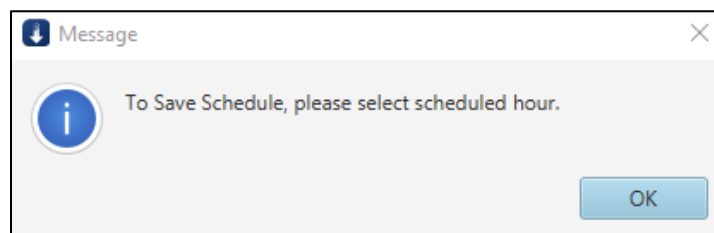


- **Time:** Using the dropdown, you are able to select the time of the day for the download, at the exact beginning of the hour.
  - **Add:** This functionality allows you to add additional download times in the same day. You may select up to five different download times for each package.

All times are expressed in UTC.

#### Pop-up message

→ **To Save Schedule, please select scheduled hour:**



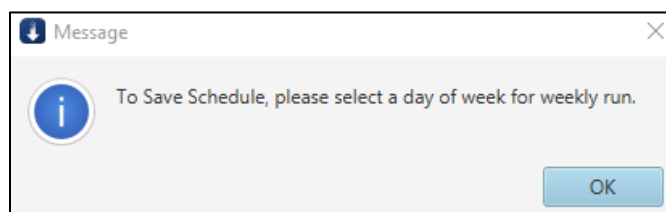
## Weekly

The weekly choice enables you to define the day of the week and the time of the day for the download.

- **Day:** Using the dropdown, you are able to select the day of the week for the download.

### Pop-up message

➔ **To Save Schedule, please select a day of week for weekly run:**

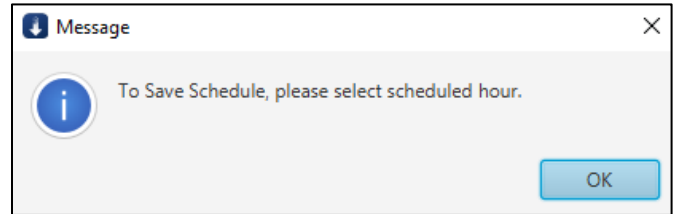


- **Time:** Using the dropdown, you are able to select the time of the day for the download, at the exact beginning of the hour.
  - **Add:** This functionality allows you to add additional download times in the same day. You may select up to five different download times for each package.

All times are expressed in UTC.

### Pop-up message

➔ **To Save Schedule, please select a day of week for weekly run:**



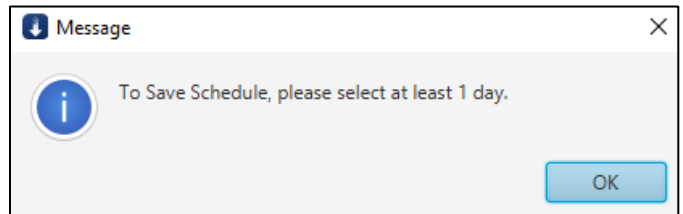
## Daily

The daily choice enables you to define the different days of the week and the time of the day for the download.

- **Day/s:**
  - You may select **Select All Days** to schedule a download for every day of the week.
  - You may select particular days.

### Pop-up message

➔ **To Save Schedule, please select at least 1 day:**

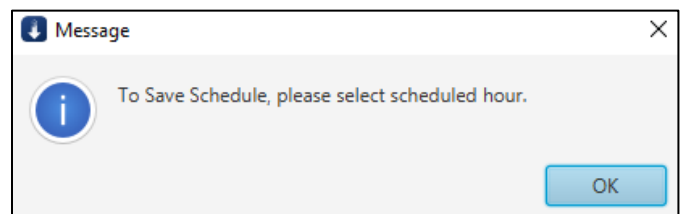


- **Time:** Using the dropdown, you are able to select the time of the day for the download, at the exact beginning of the hour.
  - **Add:** This functionality allows you to add additional download times in in the same day. You may select up to five different download times for each package.

All times are expressed in UTC.

### Pop-up message

➔ **To Save Schedule, please select scheduled hour:**



## Span

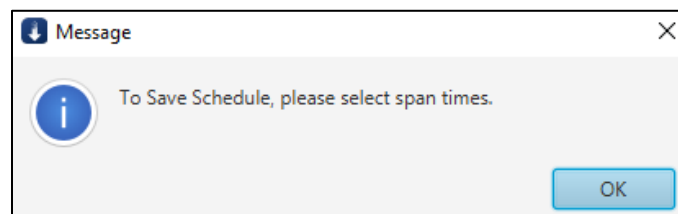
The span choice enables you to define a schedule that reflects different download frequencies.

**Span Times:** Using the dropdown, you may select a span download frequency of every:

- 15 minutes
- 30 minutes
- 1 hour
- 3 hours

**Pop-up message**

➔ **To Save Schedule, please select span times:**



Clear Selection

This functionality clears a previously selected Day or Time.

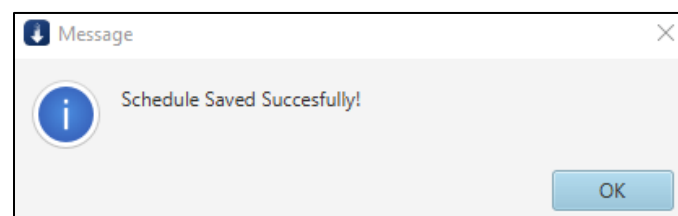
Save Schedule

This functionality enables you to save each individual download schedule, either monthly, weekly, daily, or span.

**Note:** If different recurrences are selected, clicking on Save Schedule displays a pop-up with details for packages.

**Pop-up message when all the scheduling options are properly defined**

➔ **Schedule Saved Successfully:**



Edit/Undo Schedule

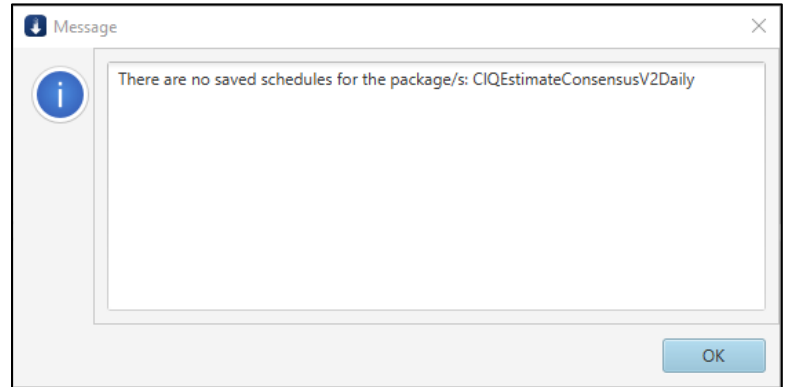
This functionality enables you to edit/undo a previously saved download schedule, either monthly, weekly, daily, or span, and start over.

Delete Schedule

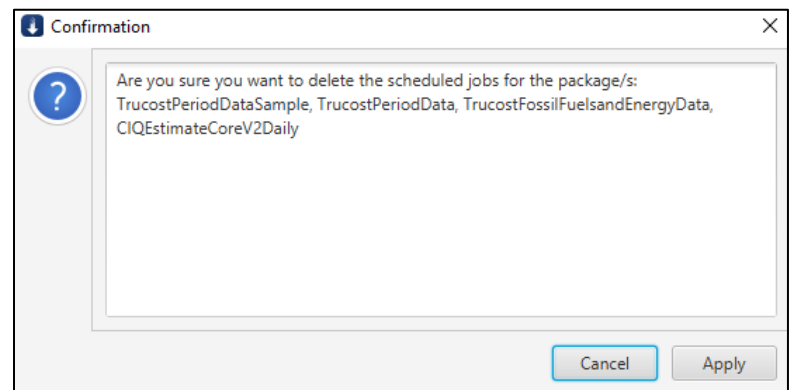
This functionality enables you to delete a schedule and start over.

**Pop-up messages**

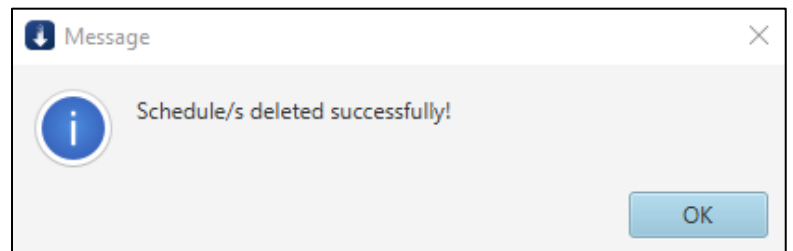
➔ **When there are no saved schedules for a particular package:**



→ Seeking confirmation to delete the scheduled job(s) for the selected packages:



→ Schedules deleted successfully:



### Supplemental Packages

**Note:** If you are entitled to any of the following 19 supplemental packages, use the name provided below:

pkg_name	pkg_code	pkg_xf_feed_id
Business Description Long	suppcxf	28
Business Segments	suppcxf	29
Business Segments History	suppcxf	30
Corporate Actions INTL	suppcxf	37

Corporate Actions INTL 2	suppcxf	5215
Corporate Actions NA	suppcxf	38
Corporate Actions Primary Hist Ex NA	suppcxf	39
Corporate Actions Reference	suppcxf	5201
Corporate Actions Ticker NA	suppcxf	40
Corporate Actions Ticker NA 2	suppcxf	5216
EPS Allocation Ratio	suppcxf	5189
Global Supplemental	suppcxf	41
Insider & Institutional	suppcxf	46
Intl Quality Ranking Monthly	suppcxf	47
Market Data Monthly	suppcxf	48
Point-In-Time	suppcxf	55
Preliminary History	suppcxf	56
Security Shares Out Monthly	suppcxf	57
Unrestated Quarterly	suppcxf	65

## Example – OnDemand page

DownloaderApp

On-Demand Scheduler Settings

**S&P Global** On-Demand

Market Intelligence

suppcxf

Package Name
BusinessDescriptionLong_suppcxf
BusinessSegmentsHistory_suppcxf
BusinessSegments_suppcxf
CorporateActionsINTL2_suppcxf
CorporateActionsINTL_suppcxf
CorporateActionsNA_suppcxf
CorporateActionsPrimaryHistExNA_suppcxf
CorporateActionsReference_suppcxf
CorporateActionsTickerNA2_suppcxf
CorporateActionsTickerNA_suppcxf
EPSAllocationRatio_suppcxf
GlobalSupplemental_suppcxf
Insider&Institutional_suppcxf
IntQualityRankingMonthly_suppcxf
MarketDataMonthly_suppcxf
Point-In-Time_suppcxf
PreliminaryHistory_suppcxf
SecuritySharesOutMonthly_suppcxf
UnrestatedQuarterly_suppcxf

## File Details:

Package Name	S3 Path	File Name	File Upload Time	Top Directory	File Size(MB)	File Status	Download Status
BusinessDescriptionLong_suppcxf						No Valid Files	
BusinessSegmentsHistory_suppcxf						No Valid Files	
BusinessSegments_suppcxf						No Valid Files	
CorporateActionsINTL2_suppcxf	suppcxf	s_co_acthist-20230126.01.caint0...	2023-01-27 02:08:55.411	Xpressfeed	1.0723		
CorporateActionsINTL2_suppcxf	suppcxf	s_caint02-20230126.flg	2023-01-27 02:09:03.408	Xpressfeed	0		
CorporateActionsINTL2_suppcxf	suppcxf	s_sec_idhist-20230126.01.caint0...	2023-01-27 02:08:58.402	Xpressfeed	1.0676		
CorporateActionsINTL2_suppcxf	suppcxf	s_sec_idhist-20230126.01.caint0...	2023-01-27 02:08:48.313	Xpressfeed	2.114		
CorporateActionsINTL2_suppcxf	suppcxf	s_co_acthist-20230126.01.caint0...	2023-01-27 02:08:45.652	Xpressfeed	1.0723		
CorporateActionsINTL2_suppcxf	suppcxf	s_caint02-20230126.flg	2023-01-27 02:08:53.140	Xpressfeed	0		
CorporateActionsNA_suppcxf	suppcxf	s_cana-20230126.flg	2023-01-27 02:09:10.363	Xpressfeed	0		
CorporateActionsNA_suppcxf	suppcxf	s_co_acthist-20230126.01.cana.xf...	2023-01-27 02:09:05.573	Xpressfeed	2.4619		
CorporateActionsPrimaryHistExNA...	suppcxf	s_sec_idhist-20230126.01.caprihis...	2023-01-27 02:09:12.458	Xpressfeed	0.963		
CorporateActionsReference_sup...	suppcxf	s_caprihistvna-20230126.flg	2023-01-27 02:09:17.556	Xpressfeed	0		
CorporateActionsReference_sup...	suppcxf	s_caref-20230126.flg	2023-01-27 02:09:23.229	Xpressfeed	0		
CorporateActionsReference_sup...	suppcxf	s_r_actioncd-20230126.01.caref.x...	2023-01-27 02:09:19.372	Xpressfeed	0.0006		
CorporateActionsTickerNA2_sup...	suppcxf	s_sec_idhist-20230126.01.caustic...	2023-01-27 02:09:32.123	Xpressfeed	3.5632		

Downloaded files will be downloaded in the **suppcxf** folder irrespective of the 19 supplementary package consideration:

Package Name	S3 Path	File Name	File Upload Time	Top Directory	File Size(MB)	File Status	Download Status
BusinessDescriptionLong_suppcxf						No Valid Files	
BusinessSegmentsHistory_suppcxf						No Valid Files	
BusinessSegments_suppcxf						No Valid Files	
CorporateActionsINTL2_suppcxf	suppcxf	s_co_acthist-20230126.01.caint0...	2023-01-27 02:08:55.411	Xpressfeed	1.0723		Downloaded
CorporateActionsINTL2_suppcxf	suppcxf	s_caint02-20230126.flg	2023-01-27 02:09:03.408	Xpressfeed	0		Downloaded
CorporateActionsINTL2_suppcxf	suppcxf	s_sec_idhist-20230126.01.caint0...	2023-01-27 02:08:58.402	Xpressfeed	1.0676		
CorporateActionsINTL2_suppcxf	suppcxf	s_sec_idhist-20230126.01.caint0...	2023-01-27 02:08:48.313	Xpressfeed	2.114		
CorporateActionsINTL2_suppcxf	suppcxf	s_co_acthist-20230126.01.caint0...	2023-01-27 02:08:45.652	Xpressfeed	1.0723		
CorporateActionsINTL2_suppcxf	suppcxf	s_caint02-20230126.flg	2023-01-27 02:08:53.140	Xpressfeed	0		
CorporateActionsNA_suppcxf	suppcxf	s_cana-20230126.flg	2023-01-27 02:09:10.363	Xpressfeed	0		
CorporateActionsNA_suppcxf	suppcxf	s_co_acthist-20230126.01.cana.xf...	2023-01-27 02:09:05.573	Xpressfeed	2.4619		

Name	Date modified	Type	Size
s_caint02-20230126.flg	1/27/2023 11:34 AM	FLG File	0 KB
s_co_acthist-20230126.01.caint02.xf...	1/27/2023 11:34 AM	Compressed (zipp...	1,099 KB

## Scheduler Service

To download the files using the Scheduler Service, you must first use the Downloader UI to set up all the schedules. Based on those schedules, the Downloader will connect to an S3 bucket to download all the files.

### Communication with the Downloader

#### Minimum Supported Frameworks and Language Versions

**Library:** Java

**Minimum Supported Version:** Amazon Corretto 1.8.

#### Minimum Supported Frameworks and Language Versions

**Ram:** Minimum 32 GB

**Storage:** Minimum 300 GB

### Downloading and Setting Up the Environment

#### 1. Download the required Java version

- a. Go to <https://docs.aws.amazon.com/corretto/latest/corretto-8-ug/downloads-list.html>
- b. From the list download the relevant JDK for specific Operating system
- c. Once saved, unzip the JDK into a folder of your choice.

#### 2. Set the environment path variables

##### *Windows 10 and Windows 8*

- a. In Search, search for and select: **System** (Control Panel)
- b. Click the **Advanced system settings** link.
- c. Click **Environment Variables**. In the section **System Variables**, find the PATH environment variable and select it. Click **Edit**. If the PATH environment variable does not exist, click **New**.
- d. In the **Edit System Variable** (or **New System Variable**) window, specify the value of the PATH environment variable. Click **OK**. Close all remaining windows by clicking **OK**.
- e. Reopen Command prompt window, and run your java code.

### Required Setup for Downloader App

1. The Downloader App uses database as **HSQLDB** and it will be hosted on **Port 9002**. Make sure the other application uses this port number as well.
2. Create a **Root directory** example(C:\DownloaderApplication) and provide the read and write permission to the folder. Use this folder as root directory, while adding settings in **Downloader application**.

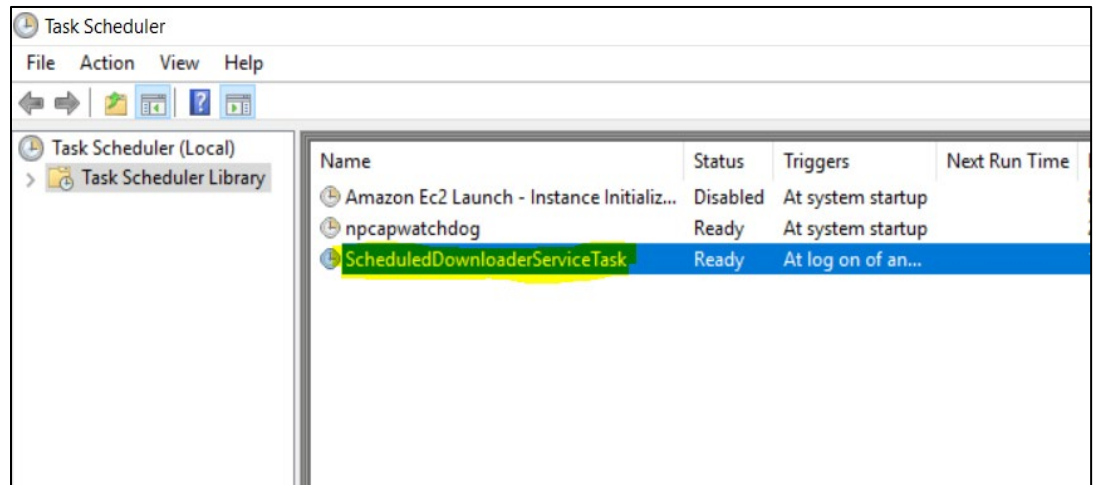
### Running the Downloader App

1. Double-click on the DownloaderApp.bat file to run the Downloader App.  
This will run the following tasks in the background:

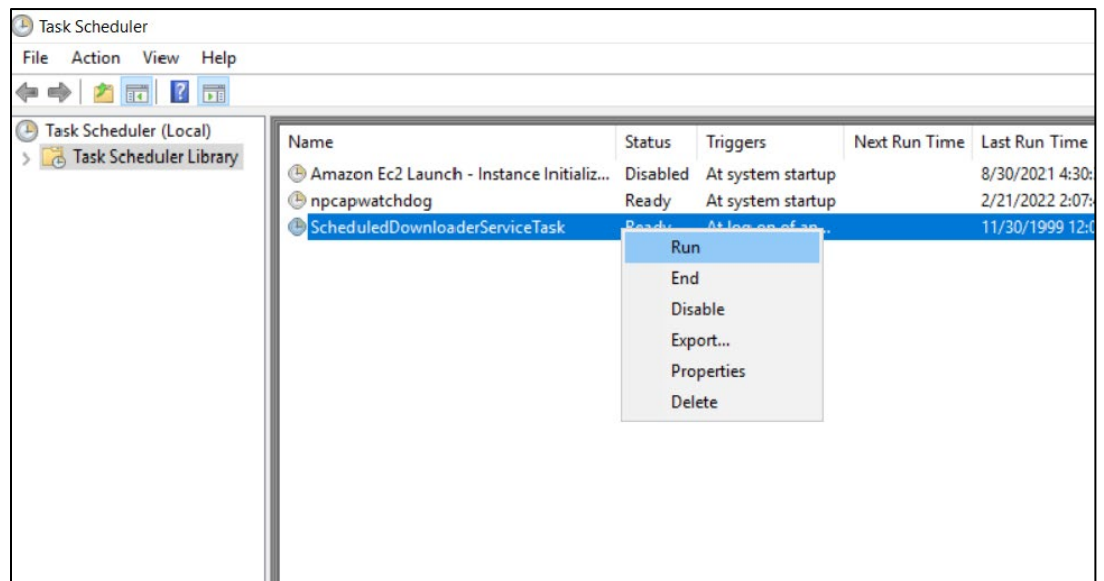
- a. Start the HSQL DB on port 9092
- b. Test for DB connection
- c. Start configuring the application
- d. Start the UI application

### Running the Scheduler Service

1. Double-click on the **Register\_Task.bat** file to register the Scheduler Service.
2. The application will get registered into the Task Scheduler application as below with the name "ScheduledDownloaderServiceTask." Whenever the system is restarted, the Scheduler service will also be restarted in the background.



3. Right-click on the task and click Run:



4. Steps 1,2, and 3 above are a one-time process; from then on, when the system is restarted, the task will start automatically.

5. If the task is required to be removed, use the 'UnRegister\_Task.bat' file to remove the task.

**Note:** To execute the above command requires administrator permissions.

# Revision History

The changes made to this document include the following:

Version	Date	Changes
1.0	06/22/2022	Initial version
1.1	01/30/2023	<ul style="list-style-type: none"><li>• Externalized the database port so that HSQL DB can be started on a desired port.</li><li>• Restructured the folder structure for the Xpressfeed Web Service Downloader files.</li><li>• Top directory changes at the code level.</li><li>• Added the <b>shutdown.bat</b> script to clean all the Xpressfeed Web Service related running java processes.</li><li>• Added the section "Supplemental Packages."</li></ul>
1.2	10/15/2024	Addition of Historical File restoration parameter and Xpressfeed Web Service Downloader Application.
1.3	08/21/2025	Addition throttling and Xpressfeed Web Service Downloader Application update to v2.2.1

Copyright © 2025 by S&P Global Market Intelligence, a division of S&P Global Inc. All rights reserved.

These materials have been prepared solely for information purposes based upon information generally available to the public and from sources believed to be reliable. No content (including index data, ratings, credit-related analyses and data, research, model, software or other application or output therefrom) or any part thereof (Content) may be modified, reverse engineered, reproduced or distributed in any form by any means, or stored in a database or retrieval system, without the prior written permission of S&P Global Market Intelligence or its affiliates (collectively, S&P Global). The Content shall not be used for any unlawful or unauthorized purposes. S&P Global and any third-party providers, (collectively S&P Global Parties) do not guarantee the accuracy, completeness, timeliness or availability of the Content. S&P Global Parties are not responsible for any errors or omissions, regardless of the cause, for the results obtained from the use of the Content. THE CONTENT IS PROVIDED ON "AS IS" BASIS. S&P GLOBAL PARTIES DISCLAIM ANY AND ALL EXPRESS OR IMPLIED WARRANTIES, INCLUDING, BUT NOT LIMITED TO, ANY WARRANTIES OF MERCHANTABILITY OR FITNESS FOR A PARTICULAR PURPOSE OR USE, FREEDOM FROM BUGS, SOFTWARE ERRORS OR DEFECTS, THAT THE CONTENT'S FUNCTIONING WILL BE UNINTERRUPTED OR THAT THE CONTENT WILL OPERATE WITH ANY SOFTWARE OR HARDWARE CONFIGURATION. In no event shall S&P Global Parties be liable to any party for any direct, indirect, incidental, exemplary, compensatory, punitive, special or consequential damages, costs, expenses, legal fees, or losses (including, without limitation, lost income or lost profits and opportunity costs or losses caused by negligence) in connection with any use of the Content even if advised of the possibility of such damages.

S&P Global Market Intelligence's opinions, quotes and credit-related and other analyses are statements of opinion as of the date they are expressed and not statements of fact or recommendations to purchase, hold, or sell any securities or to make any investment decisions, and do not address the suitability of any security. S&P Global Market Intelligence may provide index data. Direct investment in an index is not possible. Exposure to an asset class represented by an index is available through investable instruments based on that index. S&P Global Market Intelligence assumes no obligation to update the Content following publication in any form or format. The Content should not be relied on and is not a substitute for the skill, judgment and experience of the user, its management, employees, advisors and/or clients when making investment and other business decisions. S&P Global keeps certain activities of its divisions separate from each other in order to preserve the independence and objectivity of their respective activities. As a result, certain divisions of S&P Global may have information that is not available to other S&P Global divisions. S&P Global has established policies and procedures to maintain the confidentiality of certain non- public information received in connection with each analytical process.

S&P Global may receive compensation for its ratings and certain analyses, normally from issuers or underwriters of securities or from obligors. S&P Global reserves the right to disseminate its opinions and analyses. S&P Global's public ratings and analyses are made available on its Web sites, [www.standardandpoors.com](http://www.standardandpoors.com) (free of charge) and [www.ratingsdirect.com](http://www.ratingsdirect.com) (subscription), and may be distributed through other means, including via S&P Global publications and third-party redistributors. Additional information about our ratings fees is available at [www.standardandpoors.com/usratingsfees](http://www.standardandpoors.com/usratingsfees).